

MAXINKUCKEE YACHT CLUB 2011 SAILING INSTRUCTIONS

(revised May 29, 2011)

(All times given are Eastern Daylight Times)

1. RULES

The regatta will be governed by *The Racing Rules of Sailing* 2009-2012, prescriptions of the United States Sailing Association, the rules and bylaws of the ILYA, the National C Scow Sailing Association and the MC Sailing Association, except as any of these are changed by the following sailing instructions.

2. ENTRIES

Completing the registration with the Maxinkuckee Yacht Club Secretary may enter eligible boats. Skippers may change yachts in mid season and keep their points of the original yacht, but may not change back to their original yacht during the season.

3. NOTICES TO COMPETITORS

Notices to competitors will be notified on the MYC web site, E-mail and the US Mail.

4. CHANGES IN THE SAILING INSTRUCTIONS

The Race Committee ("RC") may change the sailing instructions by notice in writing if practicable. Oral changes may also be made if deemed necessary following the hoisting of the "Come Within Hail" flag.

6. SCHEDULE OF RACES

The schedule of races is posted in the MYC Yearbook and on the MYC Website.

7. CLASS FLAGS

Class Flags will be NCSSA National Flag and the MCSA National Flag.

8. RACING AREA

The navigable waters of Lake Maxinkuckee, Culver, IN.

9. THE COURSE

9.1 The course illustrations show the components that make up all courses. All marks shall be rounded as indicated.

9.2 The RC Signal Boat will display the course to be sailed with letters and numbers and the approximate compass heading from the starting line to the first mark.

9.3 A windward offset will be used on all courses.

10. MARKS

The marks will be colored balls or cylinders.

10.1 New marks, used in accordance with RRS 33 (changing the position of the next mark) will be colored balls.

10.2 RRSs 33(a) and 33(a)(1) are changed to allow the new compass bearing to be broadcast on the competitor channel.

10.3 Minor adjustments in a marks location will not be signaled.

11. THE START

11.1 Warning Signal 13:55, Start 14.00. There will be a courtesy sound signal at approx 13:54:30.

MAXINKUCKEE YACHT CLUB 2011 SAILING INSTRUCTIONS

(revised May 29, 2011)

(All times given are Eastern Daylight Times)

11.2 Races will be started using rule 26 MC classes will start 5 minutes after the C's.

11.3 Sunfish will start 3 minutes after the MC's.

11.4 The starting line will be between a staff displaying an orange flag or shape on the RC boat at the starboard end and mark at the port end.

11.5 Boats whose signals have not been made shall keep clear of the starting area and of all boats whose signal has been made.

11.6 A boat attempting to start later than 4 minutes after her starting signal shall be scored DNS without a hearing. This changes RRS 63.2 and A4.1.

11.7 The hoisting of the flags are the official signals.

11.8 No race will be started in wind of 20 mph or gust over 23 mph or at the RC discretion. No race will be started in wind less than 5 mph. Local rule.

12. CHANGE OF COURSE AFTER THE START

12.1 A Change of course after the start will be signaled before the leading boat has begun the leg, by hailing the new compass bearing.

12.2 The new mark may not then be in position. Any mark may be rounded after rounding the new mark may be relocated to maintain the original course configuration. When a subsequent

change of course a new mark is replaced, it will be replaced with an original mark.

13 THE FINISH

The finish line will be between a staff displaying an orange flag or shape on a RC boat and the nearby mark at the port end. Or the finish line will be between staffs displaying orange flags or shapes on two RC boats. The Scoring Penalty, rule 44.3 (a, b, c,) will apply.

14: TIME LIMIT

14.1 The MYC uses Time-Based Racing. The RC may shorten or lengthen the course to achieve the targeted time. The RC will fly the Charlie flag and a + or - to indicate whether the course has been shortened or lengthened. The RC may eliminate one leg and have a downwind finish at their discretion during a Saturday series.

14.2 When two races are scheduled (i.e. Saturday Series), target time for C-& MC Scows is 45 minutes and the time limit is 68 minutes. When one race is scheduled, the target time is 60 minutes and the time limit is 90 minutes.

14.3 Boats failing to finish within 30 minutes after the first boats finish, or within the time limit, whichever is later, will be scored one more than the number of boats that finished.. This changes rule 35.

14.4 If, due to weather conditions, the RC does not hoist the Warning signal, they shall hoist the Postponement over

MAXINKUCKEE YACHT CLUB 2011 SAILING INSTRUCTIONS

(revised May 29, 2011)

(All times given are Eastern Daylight Times)

the H flag. If the H flag is struck, the starting sequence will not begin sooner than *10-min.* After a race has been postponed, due to light air conditions, the RC must *wait* 30 minutes, after the original starting time to abandon for the day. The only exception to the above is storm conditions. This is a Local Rule.

15. PROTESTS

15.1 Protest shall be written on the official protest forms available from the PRO or RC and delivered there within 1 hour after the time of the last boat's finish.

15.2 Protest notices will inform competitors where and when there is a hearing in which they are parties to a hearing or named as witnesses.

15.3 Rule 61.1 (a) is changed: A protesting boat or a boat which took a 720 degree turns penalty shall identify to the race committee the racing number(s) of the other boat(s) involved in the incident(s) soon after finishing the race in which the infraction occurred. This may be waived in the event that a protesting boat is unable to finish the race.

15.4 A boat which does not satisfy the requirements of RRSs 44.1 and 44.2 as changed by this SI may be assigned a 50% scoring penalty.

15.5 A boat may accept a 50% scoring penalty prior to the hearing. This changes RRS A4.1

15.6 Decisions of the (jury) (protest committee) will be final as provided in rule 70.4.

16 SCORING

16.1 The Low Point System RRS44 will apply.

16.2 All yachts that attend their National Association annual Championship regatta will be awarded average points for the MYC races that were sailed on those particular dates. The points will be figured at the end of the year or season.

16.3 One race completed constitutes a series. If nine or more races are sailed in a series there will one throw out.

16.4 One race completed constitutes a series for the Tucker-Speer and Gilmore Memorial Day Series and the Bolton and Wurster Labor Day Series.

16.5 Two boats make a race in any race except the Sunday C Scow Championship Series. (3 boats)

16.6 A boat that did not come to the starting area (DNC) shall be scored points for the finishing place one more than the number of boats entered in the series, as required by the Racing Rules of Sailing. For purposes of applying this rule, a boat is considered 'entered in the series' if it has both a) registered and b) sailed at least one race in the series.

16.7 A boat that Did Not Start (DNS) shall be scored points for the finishing place one more than the number of boats that come to the start.

MAXINKUCKEE YACHT CLUB 2011 SAILING INSTRUCTIONS

(revised May 29, 2011)

(All times given are Eastern Daylight Times)

16.8 A boat that Does Not Finish (DNF) or is Disqualified (DSQ) shall be scored points for the finishing place one more than the number of boats that started the race.

16.9 A boat that does not come to the start (DNC) because the skipper is working on the RC boat will be scored the average number of points for that series. This will be computed at the end of the year. This may only occur twice per season.

16.10 Individual races trophies and medallions are awarded to the registered skipper for that boat unless the registered skipper informs the Scoring Chair."

17 PENALTYSYSTEM

17.1 A boat that has performed a turns penalty shall notify the RC in the manner described in 16.2. A boat that does not comply with RRS 44.1 but, prior to a hearing, acknowledges breaking a rule shall be penalized 50% of the number of boats entered, but not less than six places, except that she shall not be scored worse than DNF.

17.2 A 50% Scoring penalty may be applied when a boat satisfies one or more but not all of the requirements of rules 44.1 and 44.2 and SI 15.4.

18. SAFETY Local Rules that change RRS 41.

18.1 A boat that capsizes may accept help from a Race Committee Boar, another competitor or a spectator boat and continue in the race.

18.2 A competitor who helps a capsized boat may ask for redress from the RC, if it hinders her place in the race.

19 RADIO COMMUNICATIONS

19.1 RC Channel 72. Competitors may monitor the RC Channel, but may not communicate on the RC Channel after the warning gun.

19.2 Competitor Channel 68

19.3 No communication device may be used while racing except a VHF radio tuned to the competitor channel or a radio to monitor standard NOAA weather broadcasts.

20. MATCH RACE

The match race must be sailed between the boats and skippers, that, competed and won their respective series'.

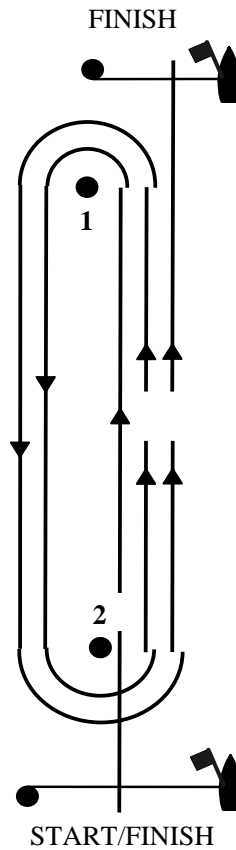
ADDENDUM A

ILLUSTRATING THE COURSE

Shown here are diagrams of course shapes. The boat's track is represented by a discontinuous line so that each diagram can describe courses with different numbers of laps. If more than one course may be used for a class, state how each particular course will be signalled.

A Windward-Leeward Course

Start – 1 – 2 – 1 – 2 – Finish

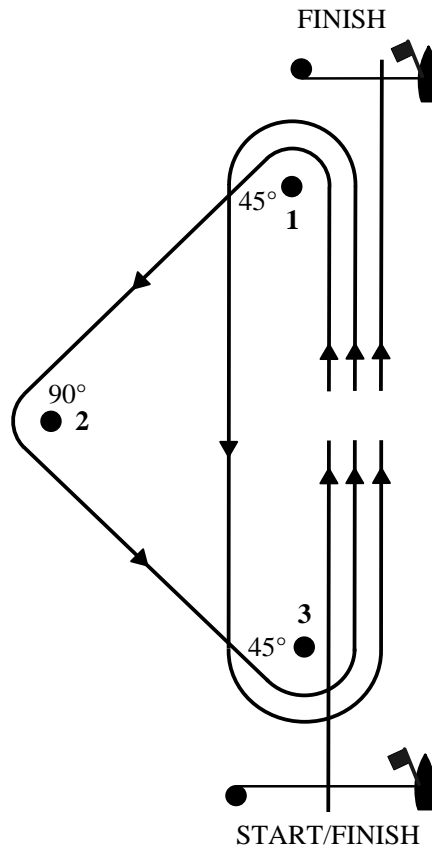


Options for this course include

- | | |
|-------------|----------------------|
| <i>W-1</i> | <i>S-1-F</i> |
| <i>W-1½</i> | <i>S-1-2-F</i> |
| <i>W-2</i> | <i>S-1-2-1-F</i> |
| <i>W-2½</i> | <i>S-1-2-1-2-F</i> |
| <i>W-3</i> | <i>S-1-2-1-2-1-F</i> |

A Windward-Leeward-Triangle Course

Start – 1 – 2 – 3 – 1 – 3 – Finish



Options for this course include

- | | |
|----------------|--------------------------------|
| <i>T-1</i> | <i>S-1-2-F</i> |
| <i>T-1 1/3</i> | <i>S-1-2-3-F</i> |
| <i>T-2</i> | <i>S-1-2-3-1-2-F</i> |
| <i>T-2 1/3</i> | <i>S-1-2-3-1-2-3-F</i> |
| <i>T-3</i> | <i>S-1-2-3-1-2-F</i> |
| <i>O-1</i> | <i>S-1-2-3-1-3-F</i> |
| <i>O-2</i> | <i>S-1-2-3-1-3-1-2-3-1-3-F</i> |
| <i>OW-1</i> | <i>S-1-2-3-1-3-1-3-F</i> |
| <i>WO-1</i> | <i>S-1-3-1-2-3-1-3-F</i> |
| <i>WT-1</i> | <i>S-1-3-1-2-3-F</i> |